




ENERGYARMOUR

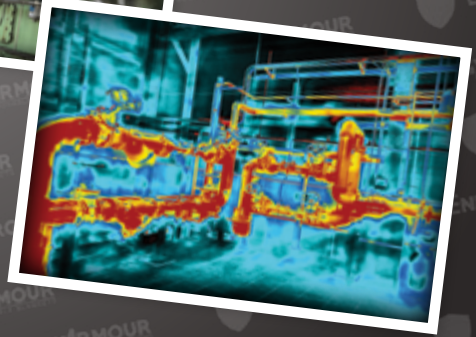
REMOVABLE BLANKETS

www.EnergyArmour.us

HEAT CONSERVATION • PERSONNEL PROTECTION • NOISE REDUCTION



Available at 



ENERGYARMOUR

REMOVABLE BLANKETS

Energy Armour Removable Blankets are a versatile, economical solution for all your thermal and acoustical needs. Our removable blankets are high quality, and yet a great value with a payback period of typically less than 3 months (vs no insulation). Energy Armour Removable Blankets are *green* by design saving energy and reducing greenhouse emissions through energy conservation.

Our blankets are used in a broad spectrum of industries, including the power, chemical, automobile, paper, gas transmission, food and oil sectors. You will also find our blankets used as OEM solutions domestically and internationally.

Energy Armour specializes in custom blanket fabrication for all types of equipment configurations, piping specialty items and specification requirements. So please email or call us for a consultation or quotation for those unusual items requiring custom measurement and fabrication.



CUSTOM BLANKETS FOR:

- Valves
- Strainers
- Pumps
- Compressors
- Turbines
- Exhaust Systems
- Equipment
- Specialties
- Instruments
- ...and MORE!

**IT'S NOT JUST A COVER, IT'S
ENERGYARMOUR!**

www.EnergyArmour.us
270.444.4993

Available at 



ENERGY ARMOUR

REMOVABLE BLANKETS

Energy Armour is your best solution for a wide variety of standard sized removable blankets. Our standard blankets are available direct or from our Amazon Store.

Energy Armour Removable Blankets are constructed of a Teflon® coated fiberglass cloth shell to shed water and are filled with a 1" thick fiberglass liner (upper temperature limit is 500F and the R-value is excellent: 4.76 @75F and 3.33 @300F). Our blankets are easily installed via 2" flaps constructed of the shell material with hook and loop integral. Additional attachment is provided by Teflon® coated drawstrings on the ends to ensure a proper tight fit. No tools are required!

Straight Cover blankets are designed for flanged pairs, straight runs of pipe and expansion joints.

Access Cover blankets are designed like **Straight Covers** with the addition of a single centered hole accommodating stems for valve handles (plug or ball type) and miscellaneous items such as thermocouples, root valve assemblies and weldolets.

Valve Cover blankets are designed for tees and valves with bonnets, like gate, globe and check valves.

End Cover blankets are designed for blind flanges and end caps.








90° Elbow Cover blankets are designed for LR 90-degree elbows.

45° Elbow Cover blankets are designed for 45-degree elbows.

Available at



STANDARD BLANKET SIZES

|  | | <i>Straight Cover</i> | <i>Access Cover</i> | <i>Valve Cover</i> | <i>End Cover</i> | <i>90° LR Elbow Cover</i> | <i>45° LR Elbow Cover</i> |
|--|-----|---|---|---|---|--|---|
| | |  |  |  |  |  |  |
| Inside Diameter | 4" | EA-SC-0416 | EA-AC-0416 | EA-VC-0422 | EA-EC-0408 | EA-NC-0400 | EA-FC-0400 |
| | 6" | EA-SC-0616 | EA-AC-0616 | EA-VC-0622 | EA-EC-0608 | EA-NC-0600 | EA-FC-0600 |
| | 8" | EA-SC-0820 | EA-AC-0820 | EA-VC-0826 | EA-EC-0810 | EA-NC-0800 | EA-FC-0800 |
| | 10" | EA-SC-1020 | EA-AC-1020 | EA-VC-1030 | EA-EC-1012 | EA-NC-1000 | EA-FC-1000 |
| | 12" | EA-SC-1220 | EA-AC-1220 | EA-VC-1236 | EA-EC-1212 | EA-NC-1200 | EA-FC-1200 |
| | 14" | EA-SC-1420 | EA-AC-1420 | EA-VC-1436 | EA-EC-1412 | EA-NC-1400 | EA-FC-1400 |
| | 16" | EA-SC-1626 | EA-AC-1626 | EA-VC-1636 | EA-EC-1614 | EA-NC-1600 | EA-FC-1600 |
| | 18" | EA-SC-1826 | EA-AC-1826 | EA-VC-1844 | EA-EC-1814 | EA-NC-1800 | EA-FC-1800 |
| | 20" | EA-SC-2026 | EA-AC-2026 | EA-VC-2044 | EA-EC-2014 | EA-NC-2000 | EA-FC-2000 |
| | 22" | EA-SC-2226 | EA-AC-2226 | EA-VC-2244 | EA-EC-2214 | EA-NC-2200 | EA-FC-2200 |

Length is shown as the last two digits of the part number (example: EA-VC-1436 is 36" long).
Elbow does not show length but extends 2" beyond standard LR arc on each end.